

## How-to Setup a MicroPod II for wiTECH 2

Article Number: 264 | Rating: Unrated | Last Updated: Tue, Apr 2, 2019 7:42 PM

For Dealerships ONLY

# How-to Setup a MicroPod II for wiTECH 2

## DESCRIPTION

If your dealership purchased a new microPOD and you would like to convert your existing microPOD for using with wiTECH 2.0 System, you need to download and install the microPOD Setup Utility to configure/setup your microPOD for wiTECH 2.0.

**IMPORTANT:** You will need to have users associated to the microPod in Technical Service Portal before running the microPod Setup Utility. Please allow 1 hour for the users to sync and then run the microPod Setup Utility. For steps to associate service technicians follow the link below.

<https://kb.fcawitech.com/article/steps-to-associate-micropods-to-service-technician-215.html>

For a video version of setting up a microPod 2 for wiTECH 2.0, please watch [How To Set Up A New Device With wiTECH 2](#) (Note. You will have to be [Logged into wiTECH 2.0](#) to view video)

**NOTE:** microPODs with a serial number beginning with "WFP" should NOT be used with this utility.

## PROCEDURE

If you have a restricted network, you must first make sure that all sites listed below are enabled to be able to successfully use microPOD Setup Utility and the wiTECH 2.0 System.

1. [mixpanel.com](http://mixpanel.com)
2. [bugsnag.com](http://bugsnag.com)
3. [fcawitech.com](http://fcawitech.com)
4. [chrysler.com](http://chrysler.com)
5. [dealerconnect.com](http://dealerconnect.com)
6. [jeep.com](http://jeep.com)
7. [witechsystem.com](http://witechsystem.com)
8. <https://fonts.googleapis.com/css?family=Roboto:400,300>

**Note:** Please disable any Anti-Virus software that you have on your computer in order to allow the microPOD Setup Utility to install and run properly.

## Steps to download and install the microPOD Setup Utility

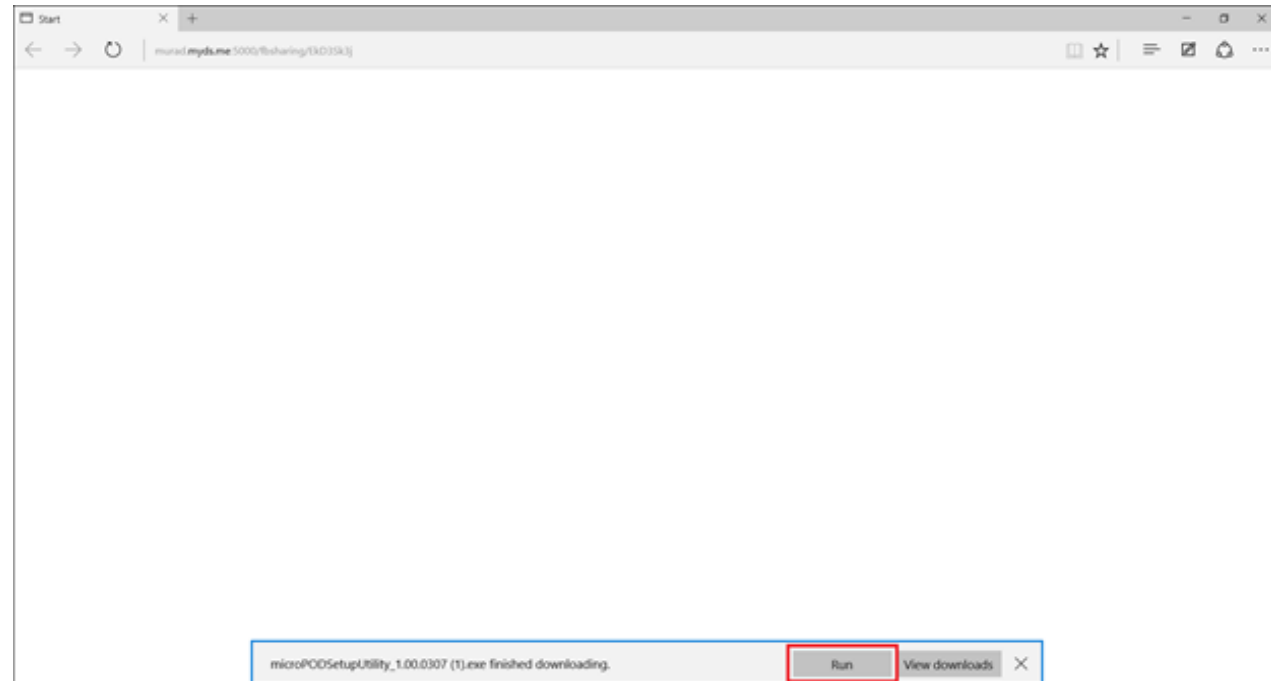
**IMPORTANT:** Once the microPOD is configured using the microPOD Setup Utility, all the microPOD Wireless Settings will be deleted. You will be required to follow the instructions

from the KB link titled "How to configure a Wireless Profile on a microPOD II".

To download the application, please login to DealerCONNECT > Service > wiTECH Information > microPod Setup Utility

## Step 1

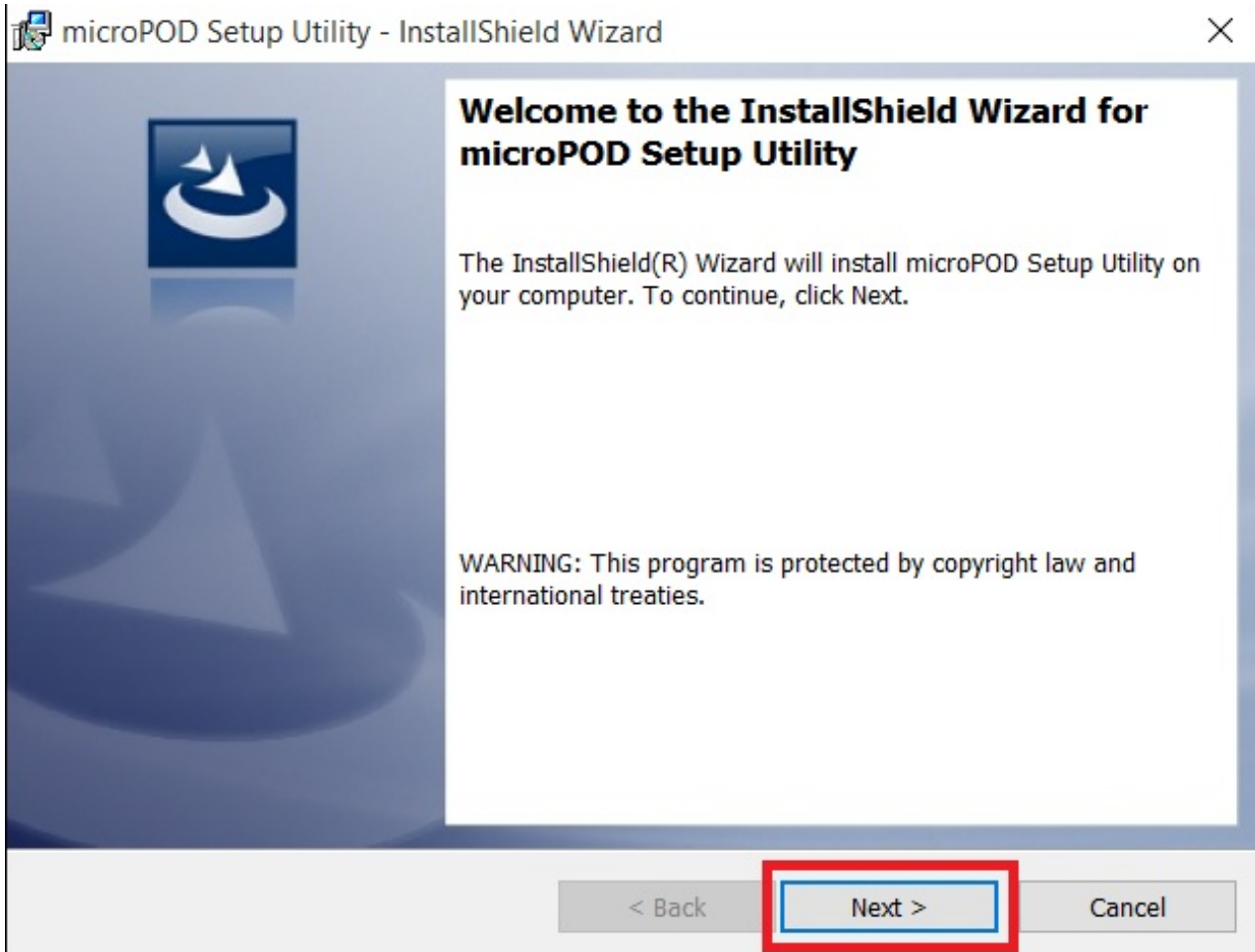
Click on "Run" to begin the downloading process of microPOD Setup Utility.



## Step 2

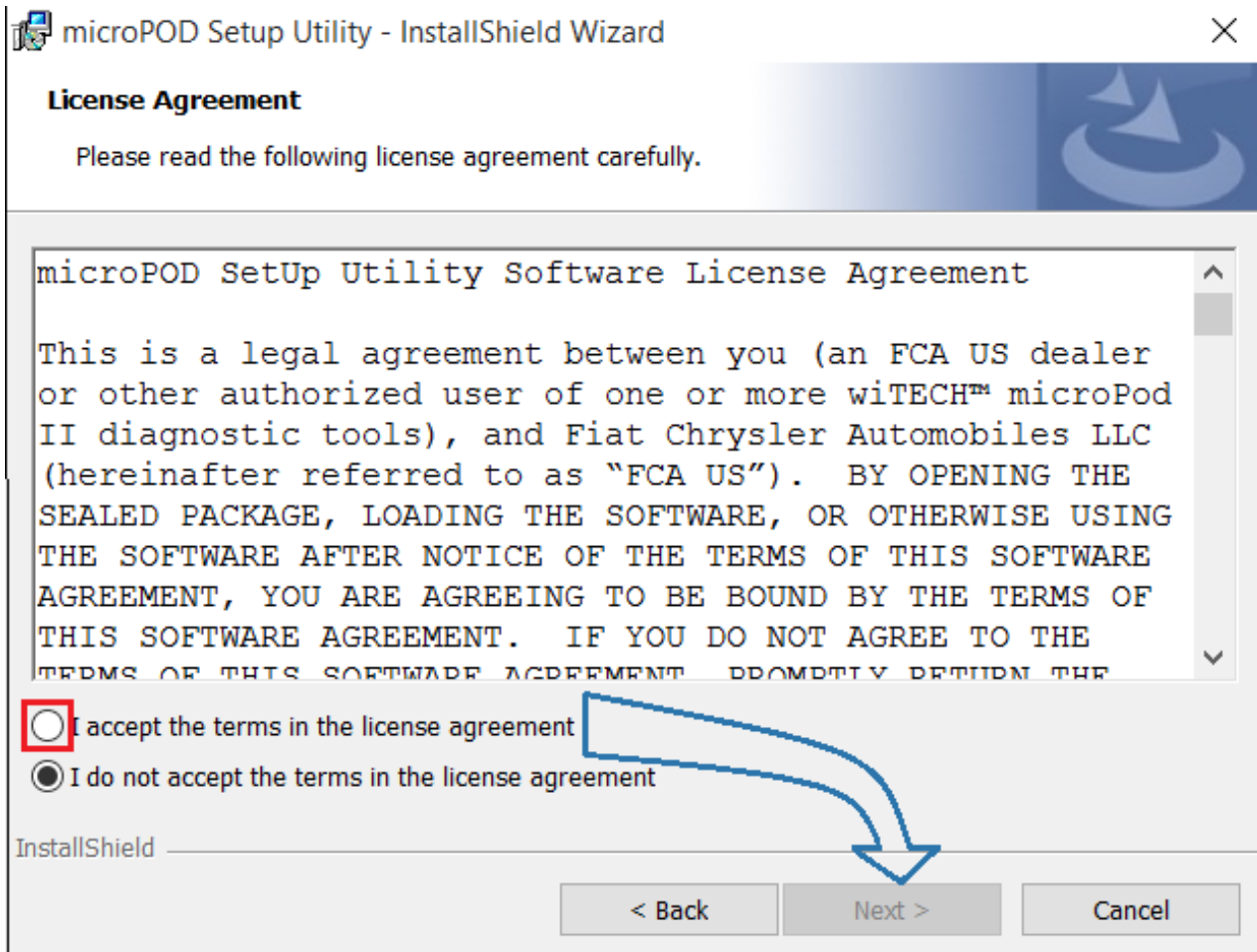
The install wizard will appear to install the wiTECH Driver x64 onto your computer if your PC has not been installed with wiTECH 1.0 application.

If the PC has been installed with wiTECH 1.0 App, you will not see the screen below and proceed to **Step 6**. Otherwise, click "Next" to proceed.



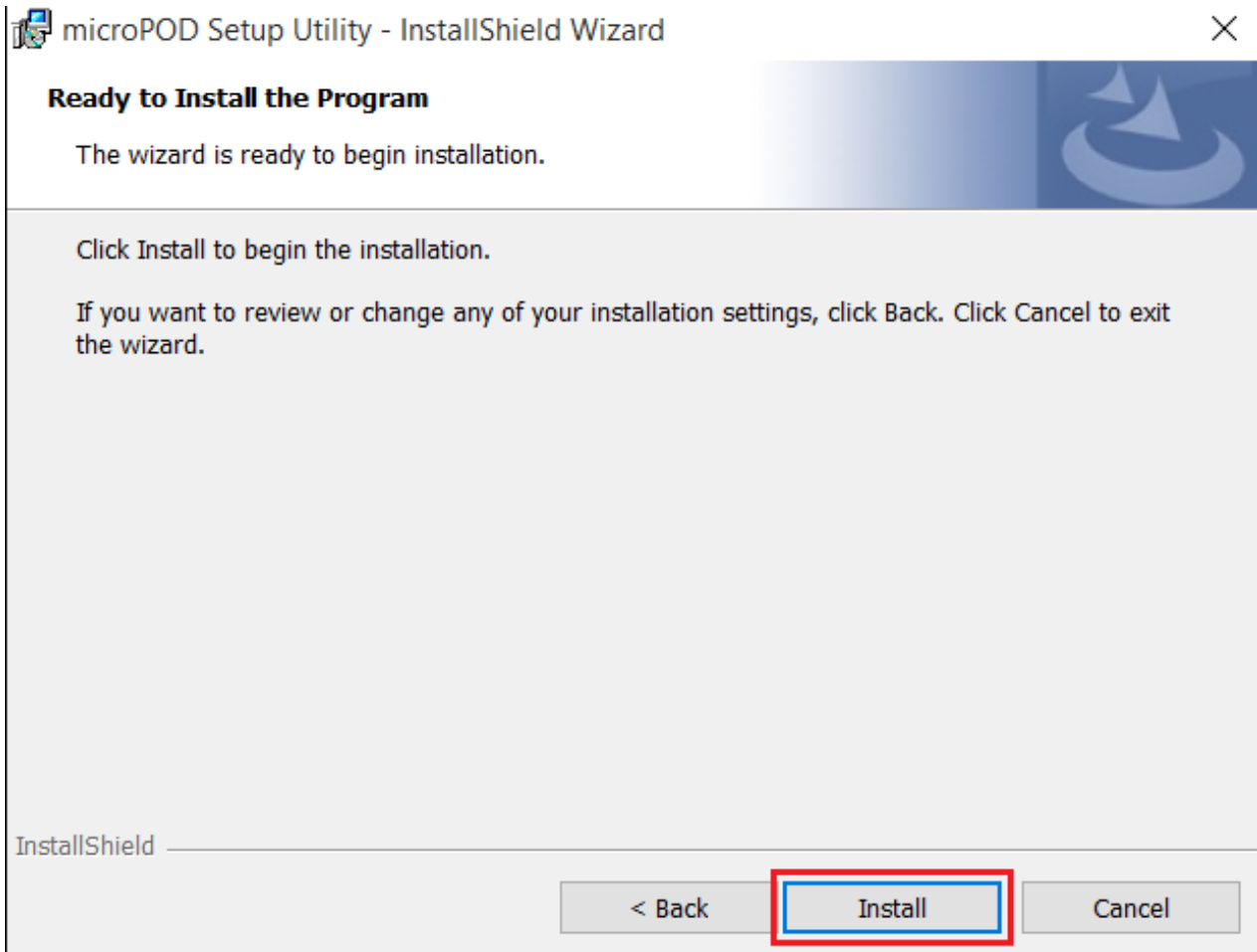
### Step 3

Read the License Agreement carefully, and accept the terms in the license agreement. Then, click "Next" to continue.



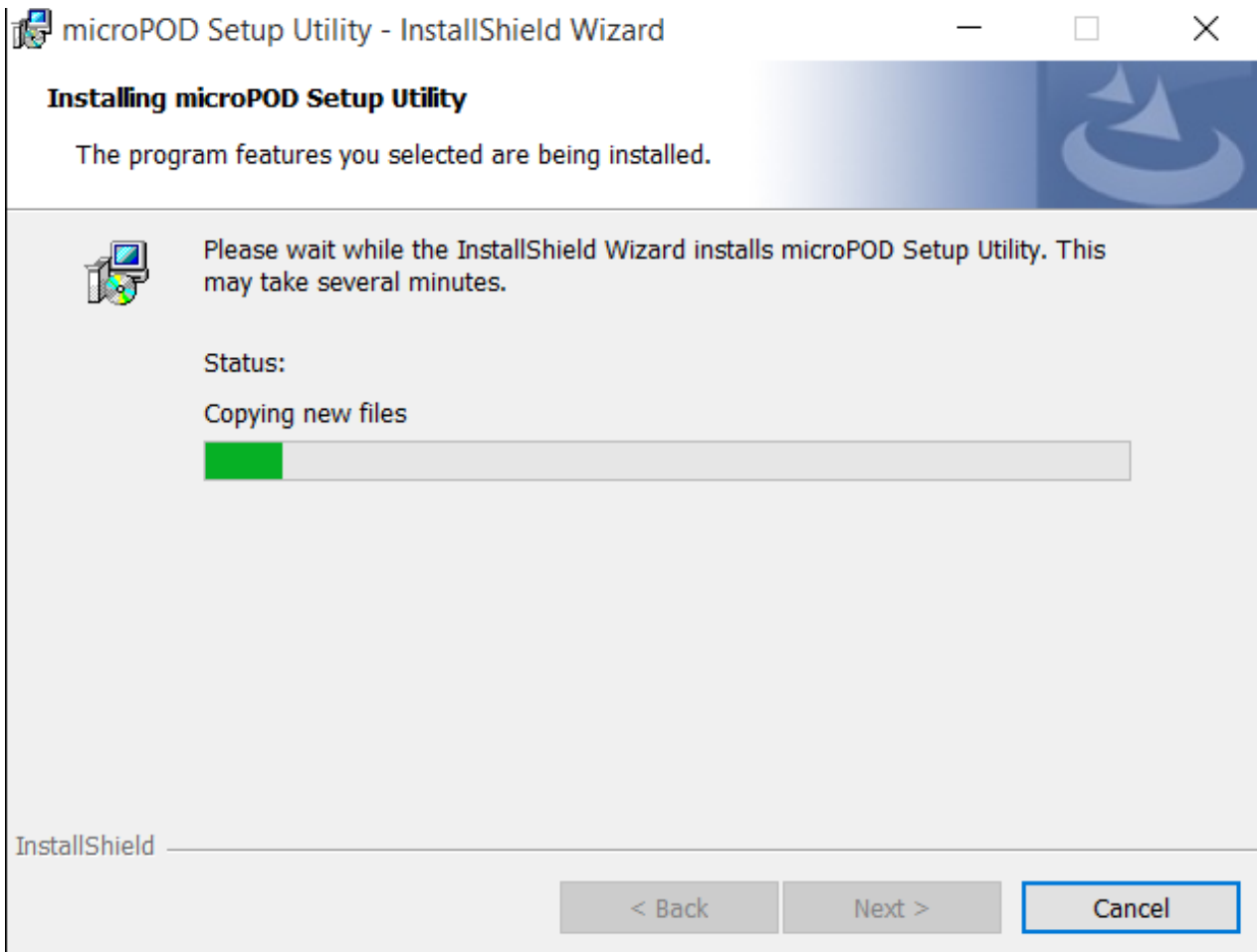
#### Step 4

You are now ready to start the actual installation of the driver. You now need to click on "Install" for it to start.



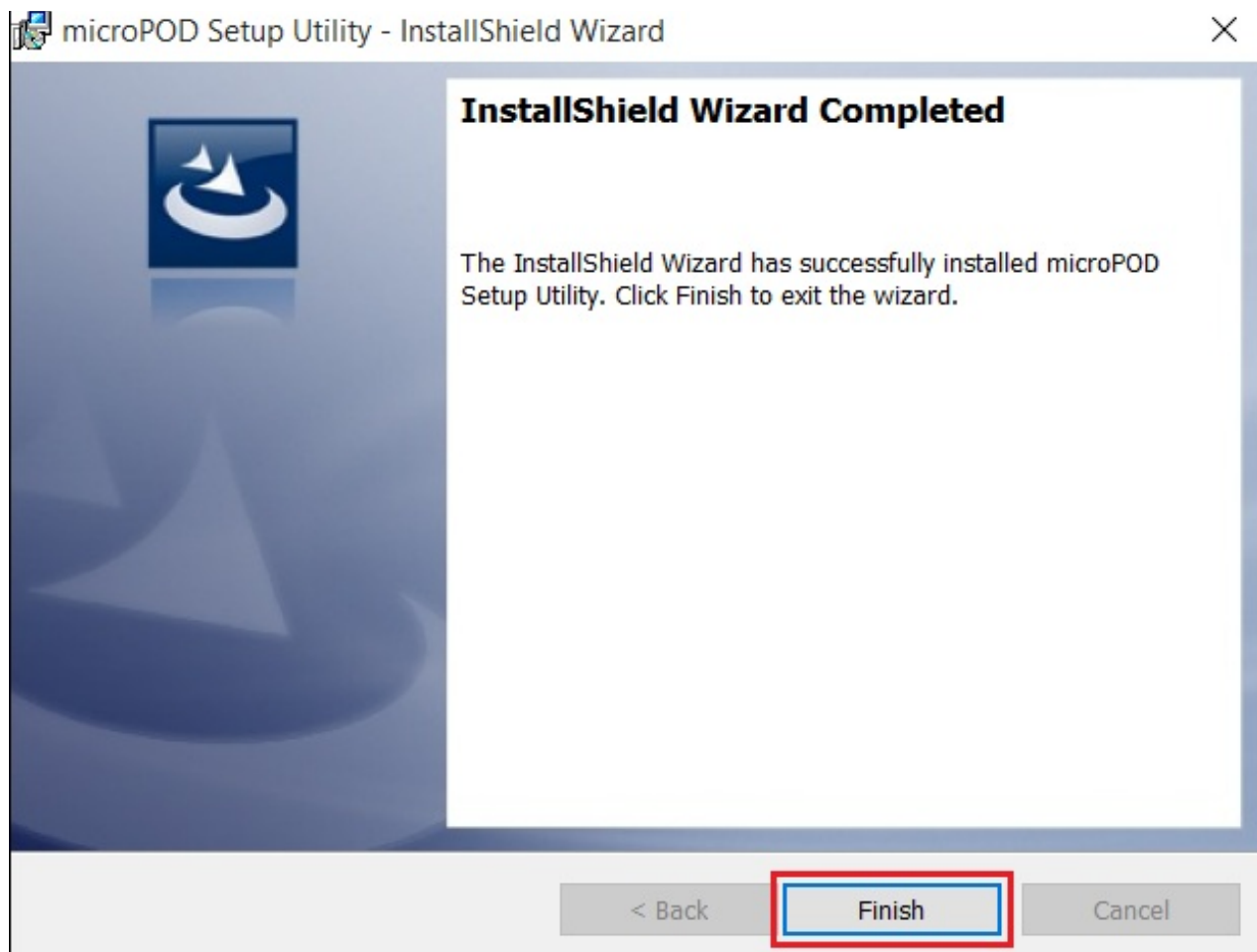
## Step 5

This will now install the wiTECH Driver x64. Once complete, the program will automatically proceed to the next step.



## Step 6

Once the installation has completed, click "Finish". Proceed to the following section, "Using the microPOD Setup Utility".



## Using the microPOD Setup Utility

**NOTE:** Please make sure that your computer is connected to the internet and the microPOD is connected to the computer via USB before starting this process. This application will help you configure your microPOD for wiTECH 2.0.

### Step 1

Start microPOD Setup Utility by clicking the icon on the desktop:



If the microPOD Setup Utility that is installed is out of date, you will be forced to update to the newer version of the application.

### Step 2

Please make sure your microPOD is connected to the PC via USB.



Starting the microPOD Setup Utility...

2.0

Step 2a



If you see the following screen you may not be connected to the internet, or have a firewall that blocks 1 or more of these websites.



Due to network configuration, application will not be able to configure microPOD device. Please contact your Network Administrator to allow an access for the following URLs:

- ✘ [www.mixpanel.com](http://www.mixpanel.com)
- [www.bugsnag.com](http://www.bugsnag.com)
- [www.fcawitech.com](http://www.fcawitech.com)
- [www.chrysler.com](http://www.chrysler.com)
- [www.dealerconnect.com](http://www.dealerconnect.com)
- [www.jeep.com](http://www.jeep.com)
- [www.witechsystem.com](http://www.witechsystem.com)
- <https://fonts.googleapis.com/css?family=Roboto:400,300>

Exit

Select "Continue" on the next screen for wiTECH 2.0 Device Setup and Configuration.





### wiTECH 2.0 Device Setup & Configuration:

Due to new registration requirements, a microPOD device will no longer be compatible with wiTECH 1.0 after it is registered with wiTECH 2.0.

Once a device is registered for wiTECH 2.0, it can no longer be converted to be used with wiTECH 1.0 again. We highly recommend assigning a dedicated microPOD device to be used with wiTECH 1.0 when needed.

To setup your microPOD device with wiTECH 2.0, click "Continue".

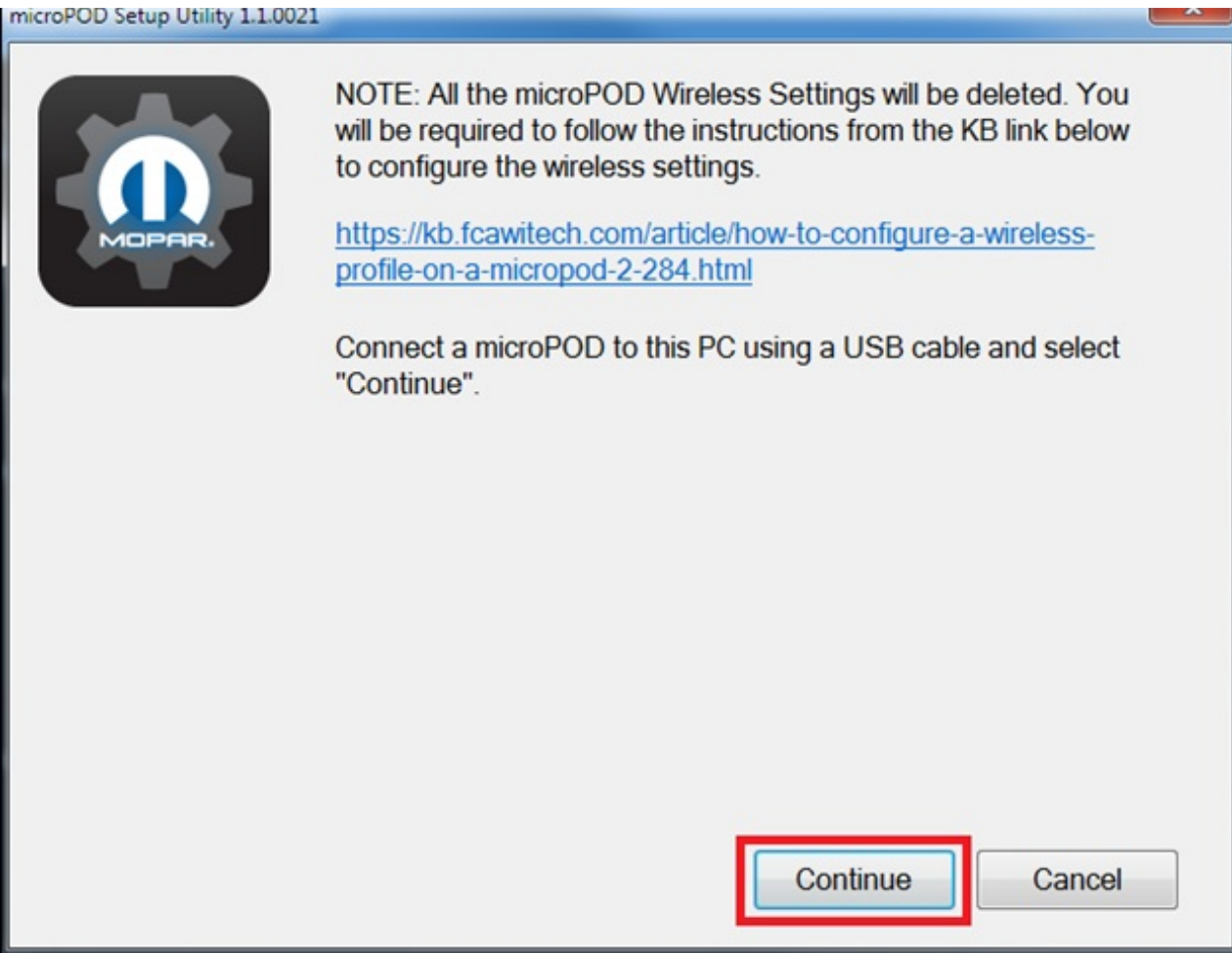
To configure the wireless settings on a microPOD device to use with wiTECH 2.0, click "Wireless Configuration".

Continue

Wireless Configuration

NOTE: If you only want to configure the wireless setting on a microPod device to use with wiTECH 2.0, click "Wireless Configuration" and follow instructions.

Select "Continue" on the next screen to begin attempting to connect to the microPOD device.



### Step 3

Once your microPOD II is recognized by the utility, select "Continue" to proceed with the configuration.

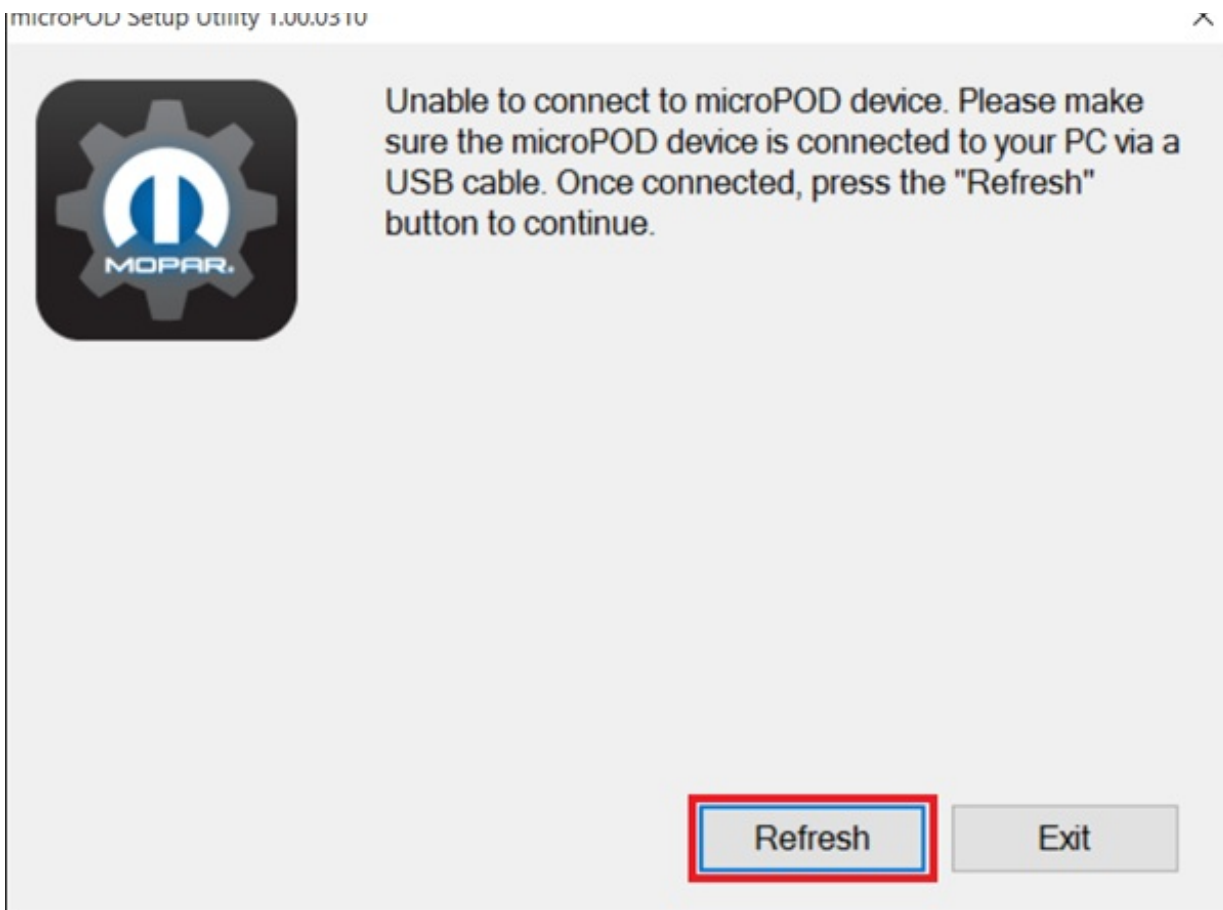


microPOD device WSP-XXXXX with firmware version X.X.X is connected to the PC. If you wish to configure the microPOD device, please select "Continue".

**NOTE:** microPODs with a serial number beginning with "WFP" should NOT be used with this utility.

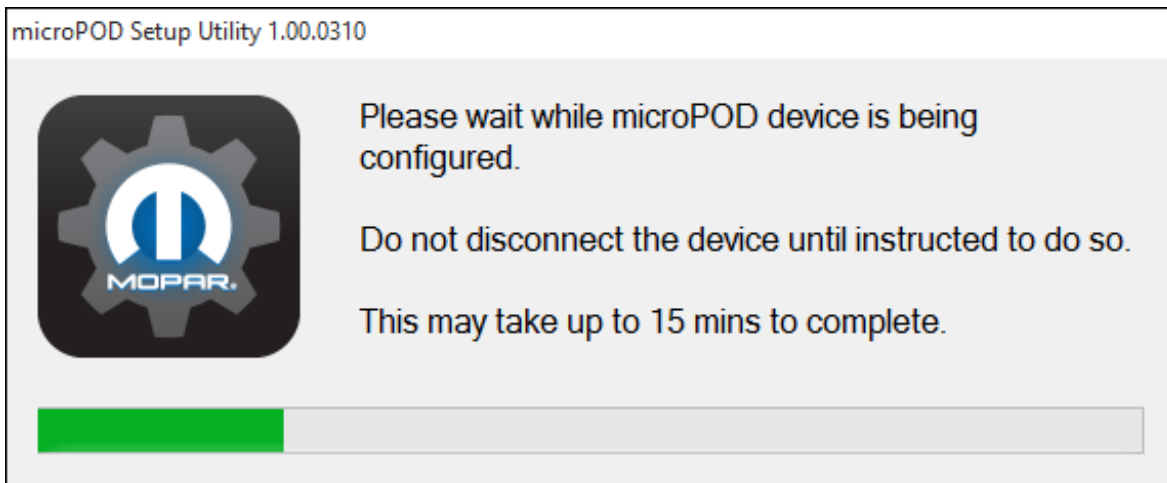
### Step 3a

If the utility does not find the microPOD device, please assure that the microPOD is connected via USB and click "Refresh".



### Step 5

The following screen will appear for up to 15 minutes while the microPOD device is being configured.



### Step 6

The following screen will appear when the utility completed the configuration of microPOD for wiTECH 2.0 Application.

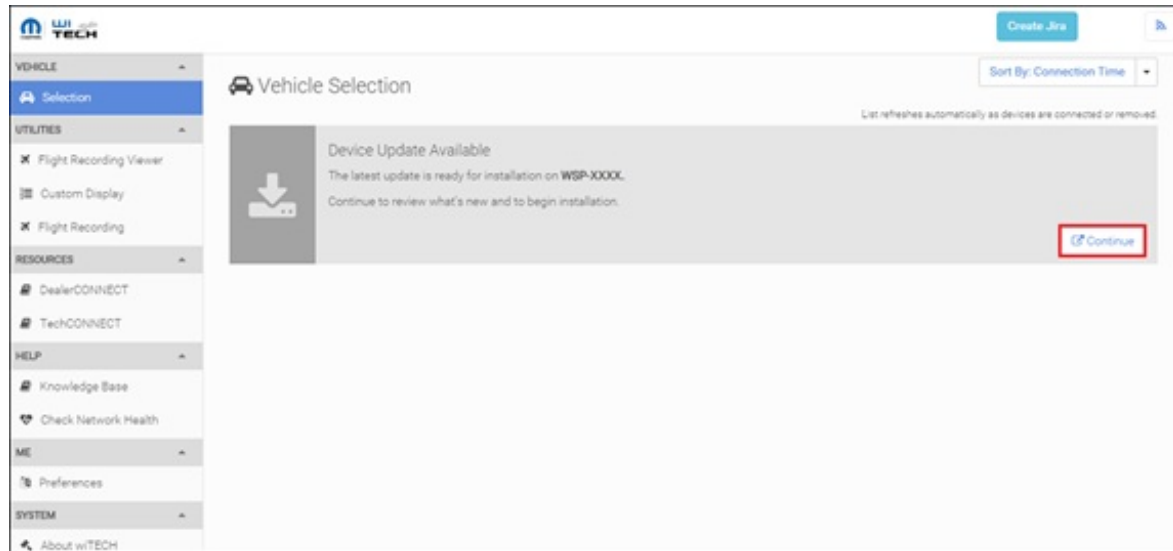
**Note:** After microPOD Setup Utility is ran, all existing wireless networks will be removed from the microPOD.

**Important!** Leave the microPod Setup Utility window running as you will be required to complete software updates to the microPod device before configuring the wireless.

### Step 6a

## Step 6

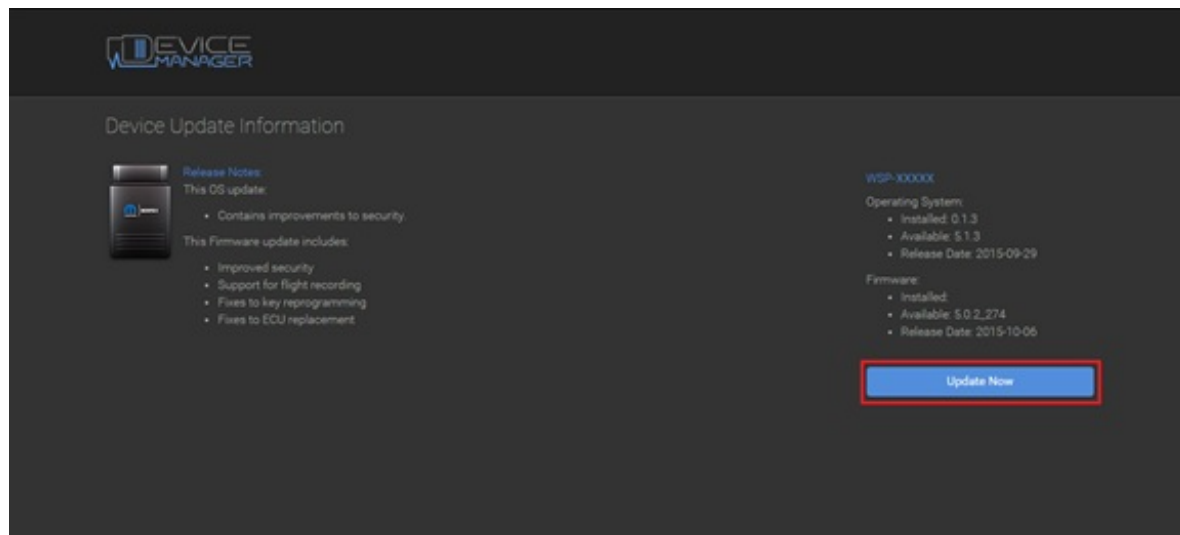
Login into wiTECH 2.0 with SID that has been assigned to the microPod at <https://login.n.fcawitech.com>. The microPOD II that was just configured using the microPOD Setup Utility should appear in the wiTECH 2.0 discovery. You will need to update the operating system of your microPOD II before it can be used with wiTECH 2.0. Click "Continue", and your web browser will redirect you to the page to download and install the operating system update as seen in the following step.



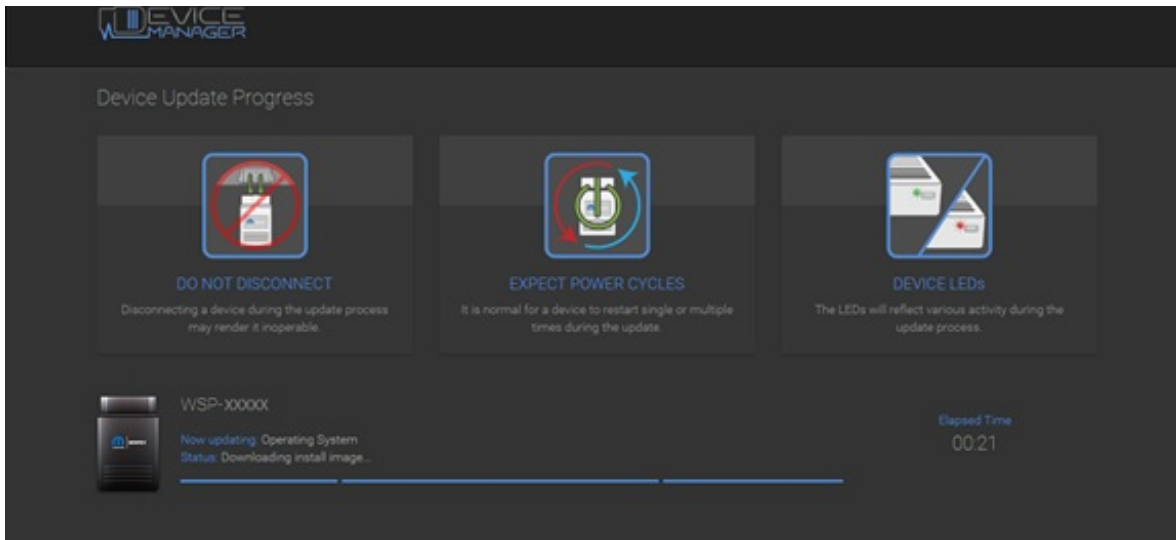
**\*NOTE:** If microPOD II does not show up in discovery after a couple of minutes please power cycle your microPOD II by unplugging it and plugging it back in.

## Step 7

Click "Update Now" and your microPOD II should continue to the update screen. **Once updating, do not interrupt your microPOD II at any point until the update is complete.**

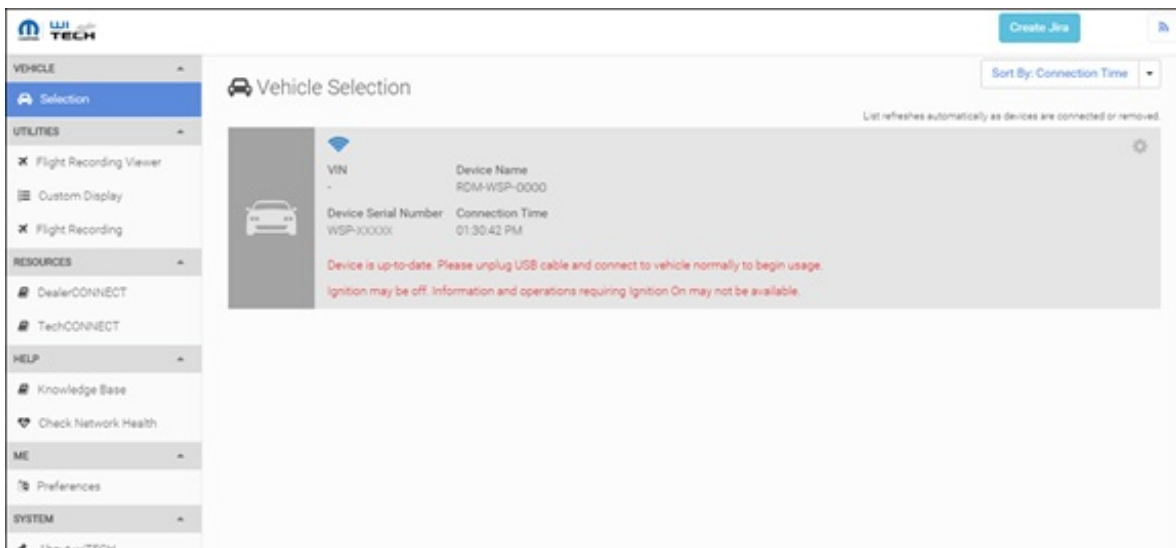
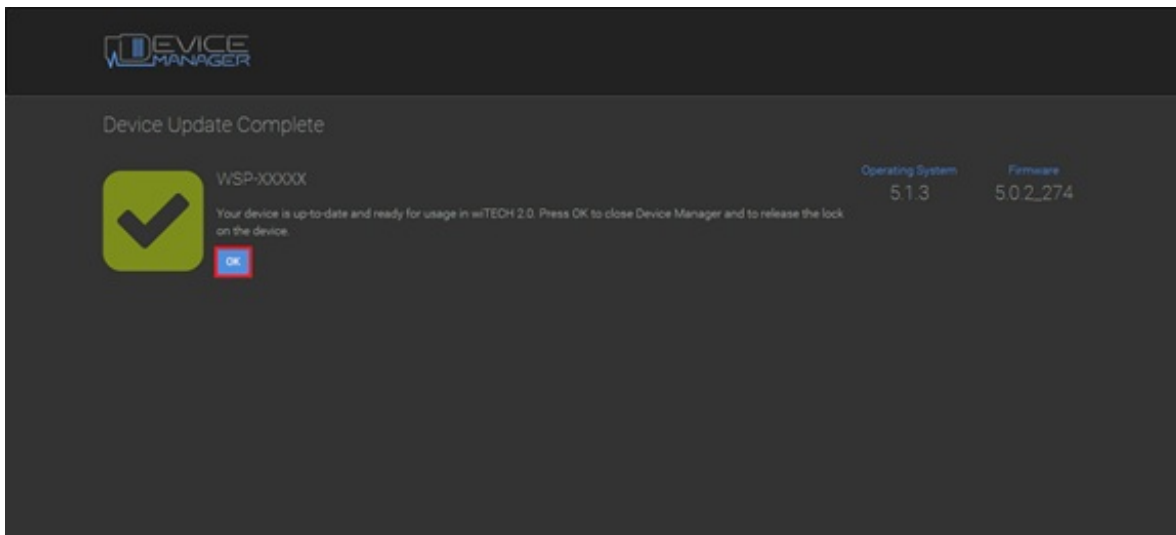


**\*NOTE:** This can take upwards of 9 minutes. It is normal activity for the microPOD II to reboot.



## Step 8

Click "OK" and you will be navigated back to the wiTECH 2.0 discovery page. Your microPOD II should appear updated and ready for use.



**DO NOT UNPLUG USB cable from the pod until the WiFi is configured successfully first.**

## Step 9

With the microPod Setup Utility still running, please follow the KB link listed below to configure wireless on the microPod device.

<https://kb.fcawitech.com/article/how-to-configure-a-wireless-profile-on-a-micropod-2-284.html>

Contact the wiTECH Help Desk at 1-888-wiTECH-1 /888-948-3241 or email [witechsupport@dcctools.com](mailto:witechsupport@dcctools.com) if you need further assistance with configuring microPOD for wiTECH 2.0 System.

Posted : Alex Richmond - Wed, Oct 21, 2015 9:16 PM. This article has been viewed 83053 times.

Online URL: <https://kb.fcawitech.com/article/how-to-setup-a-micropod-ii-for-witech-2-264.html>