

How-to Configure a Wireless Profile on a microPOD 2

Article Number: 284 | Rating: Unrated | Last Updated: Tue, Jul 31, 2018 2:05 PM

For Dealerships ONLY

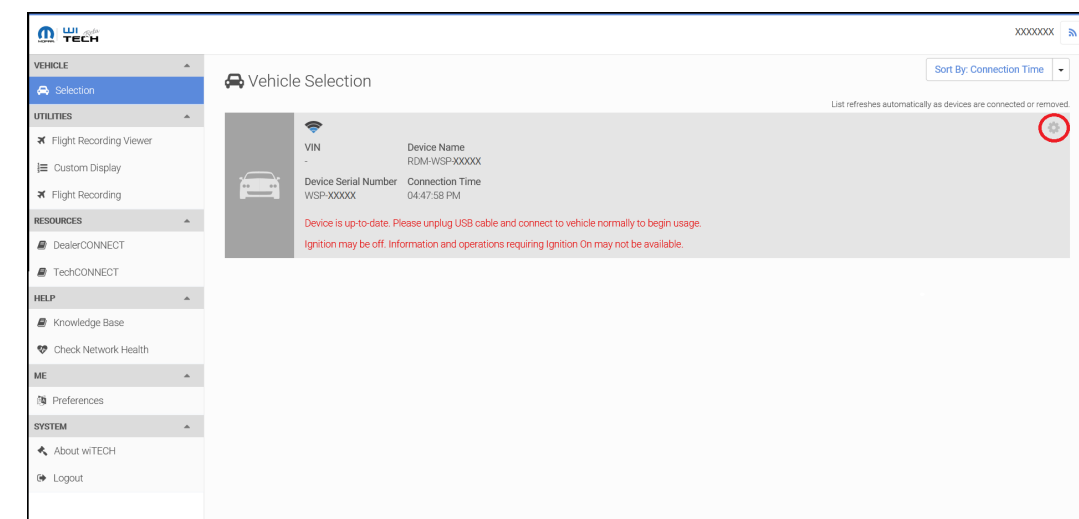
How-to Configure a Wireless Profile on a microPod 2

ATTENTION: Prior to configuring and updating your microPOD, please follow Knowledge Base (KB) article [Steps to Associate microPods to Service Technician](#) .

Note: If this is a new microPOD, or it has never been used with wiTECH 2.0, you will have to run the MicroPOD Setup Utility. This KB article will show you how to do that: [How-to Setup a MicroPod II for wiTECH 2](#)

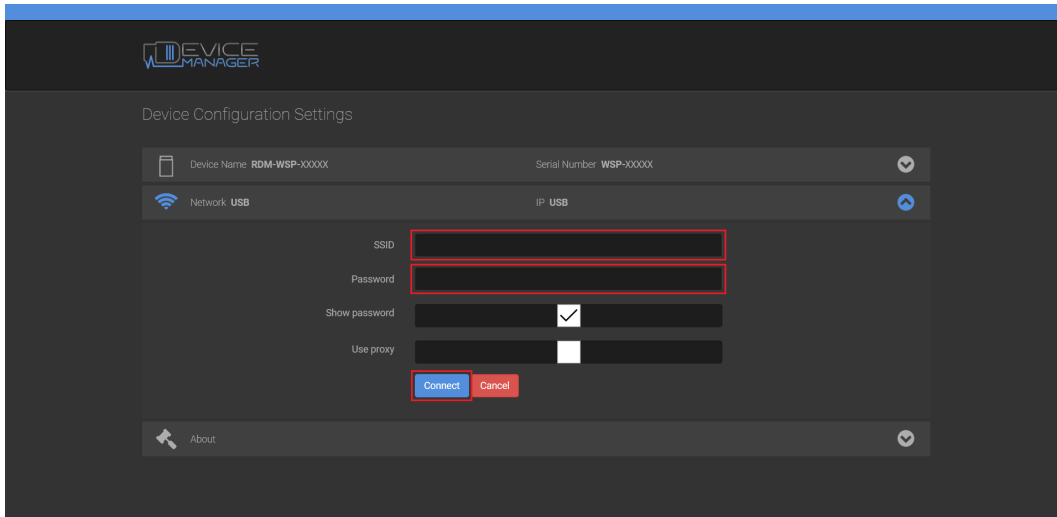
Note: If you are looking to connect your microPOD to a Proxy Server instead of a regular wireless connection you will want to follow the steps listed in the following article: [How-To Configure a MicroPOD II to a Proxy Server](#)

1. On the PC, open the microPOD Setup Utility and **leave the microPOD Setup Utility running in the background**. Only open the microPOD Setup Utility, do not select Continue in the Utility. (the microPOD Setup Utility allows the microPOD to communicate with the wiTECH 2 servers through the PC's internet connection)
2. If the microPod Setup Utility requires an update, please go ahead and allow the update and then relaunch the utility.
3. Connect the microPOD to your computer via the USB cable you were provided.
4. Using an internet browser, login to your wiTECH 2 account at <https://login.n.fcawitech.com>
5. If required, complete software updates to the microPOD device.
6. Click on the gear in the vehicle selection screen.

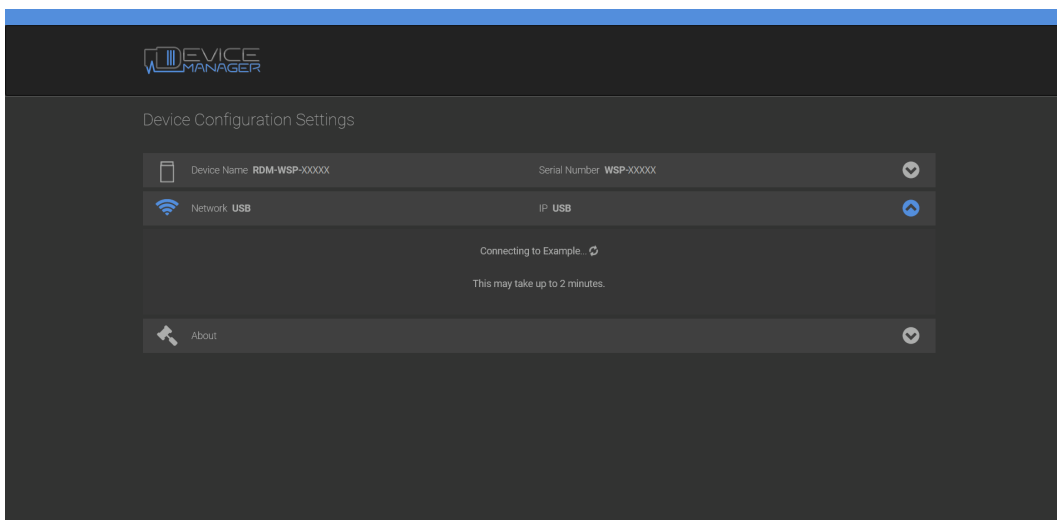


7. Click on the downward facing arrow on the row for Network.

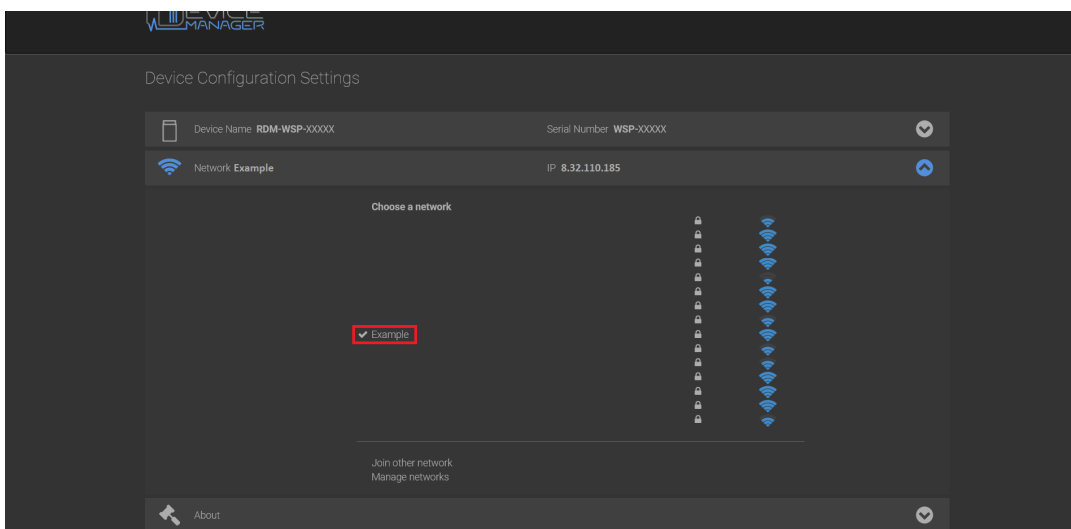
Reminder: Your microPOD will continuously look for a network.



12. Once you have done this the microPOD will attempt to connect to the network.



13. If your microPOD is correctly connected to your network then you will see a check-mark next your network's SSID.



14. The microPOD device is now connected to wireless. Close the Device Configuration Settings tab and the microPOD Setup Utility.

Posted : Emil Ghiurau - Fri, Feb 5, 2016 10:27 PM. This article has been viewed 143405 times.

Online URL: <https://kb.fcawitech.com/article/how-to-configure-a-wireless-profile-on-a-micropod-2-284.html>